



TeloSystems
FCC ID:2ANY6-TE390

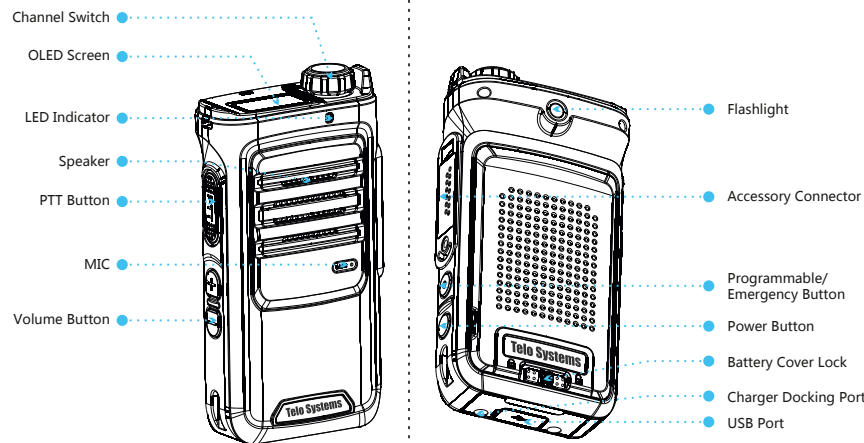
TE390

Quick Start Guide



Thanks for choosing our product!
This Quick Start Guide Only applicable to: TE390.
Before using the product, please read the Quick Start Guide to fully benefit from it.

Operating State	Indication
Standby	Green (Blinking)
Searching Network	Green (Fast Blinking)
Low Battery	Red (Blinking)
Charging	Red (Steady)
PTT Transmitting	Red (Steady)
PTT Receiving	Green (Steady)



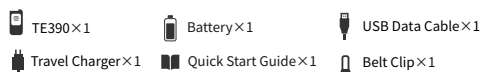
Telo Systems
Tel: +86-755-86950766
E-mail: support@telosystems.com
Add:4/F, Chuangye Building, Seven-Star Park,
Yu'an 2nd Road, Bao'an District, Shenzhen, China
www.telosystems.com

Note

- Warranty period is 1 year from date of purchase.

This product involves constant upgrading and/or improvement, our company reserves the right to change the specifications of software and/or hardware mentioned in this operating guide without any prior notice. The product specifications and information mentioned in the operating guide are for reference only.

Check List



Notice:

Please check the following accessories before you discard the packing material. Please contact your local dealer immediately if there is any missing or damage parts.

Basic Operation

Power on/off

Long press the Power Button to power on/off the device.

Screen interaction

Channel Switch

Single Click: Lighten the screen/ enter a menu or choose an option

Long Press: Back to the previous menu

Double Click: When you are connecting the WIFI and inputting password, double click to input lowercase.

Switch clockwise/counter-clockwise: Switch/back to the next/previous menu item

WiFi Connection

Go to the **Settings > WiFi** interface. Enable the WiFi option (single click to revert the status), Switch to find the right access point you want to connect to, single click the right access point then input the password in (Single click to input lowercase, double click to input uppercase). Switch to select inputting characters. Click "✓" to confirm / exit the password inputting.

GPS Location

Go to the **Settings > Location** interface, single click to enable or disable GPS location.

Date & Time Configuration

Go to the **Settings > Date&Time** interface, single click to configure time display format.

Bluetooth Connection

Go to the **Settings > Bluetooth** interface, Switch to choose "PTT Button", single click to enable Bluetooth connection, after Scanning for a while, switch and find the right device name, single click to confirm bonding to the Bluetooth button, others Bluetooth device please choose "Headset" with the same operation.

Cellular Data Connection

Go to the **Settings > Cellular data** interface, single click to revert enable or disable cellular data connection.

Flashlight

Go to the **Settings > Flashlight** interface, single click to turn on/off the flashlight. or Press the Vol- and Programmable button at the same time to turn on/off it.

Battery Percentage

Go to the **Settings > Battery percentage** interface, single click to show / hide the battery percentage status on the display screen.

M6 Settings

Go to the **Settings > M6 Settings** interface, single click the channel switch to choose "Headset" or "Remote Speaker Mic" mode.

Language

Go to the **Settings > Language** interface, switch and single click to choose the right language.

Factory Reset

Go to the **Settings > Reset** interface, under the interface "Are you sure about recovery?", switch the options, choose "Yes" to reset and "No" to exit.

System Information

Go to the **Settings > About** interface, find the device and SIM card information including Operation System Version, IMEI Code, Battery Percent, SIM Name, SIM Level, SIM Type.

System Update

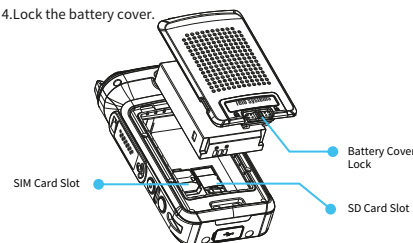
Go to **Settings > System Update** interface, single click to check updates.

Push-To-Talk Application

Go to the **PTT** item, single click to enter in the PTT application interface. Switch between different groups to execute instant communication.

Before Use

- Release the battery cover lock, move the battery cover away.
- According to the indication, insert the SIM or SD card inside the SIM or SD card slot.
- Put the Battery into the slot.
- Lock the battery cover.



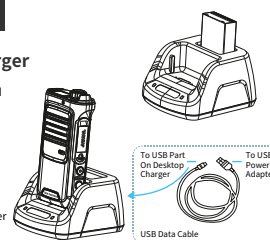
Charging

Using Desktop Charger

Connect the Desktop Charger and the Power Adapter with an USB Data Cable.

Red light on the desktop charger indicates battery charging in progress.

Green light on the desktop charger indicates fully charged.

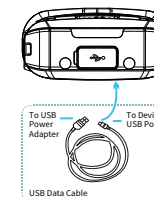


Using USB Data Cable

Connect the LTE handheld and power adapter using the USB Data Cable.

Red light on the LTE handheld indicates battery charging in progress.

Green lights on indicates fully charged.



Notice:

Always use Telo Original batteries and chargers. The warranty does not cover damage caused by non-Telo batteries and/or chargers.

WARNING: DO NOT USE THE ABOVE TWO CHARGING METHODS SIMULTANEOUSLY.

Cautions

- Risk of explosion, fire or chemical burns if battery is disassembled, crushed, stricken, trampled, short-circuited, incinerated or exposed to high temperature over 60°C.
- Don't use damaged or weeping battery.
- Keep the battery dry and out of Children's reach.
- Properly dispose of failure batteries in accordance with local regulations.
- Although your device is quite sturdy, it is a complex piece of equipment and can be broken. Avoid dropping, hitting, bending, or sitting on it.
- Make sure the charger/USB port, microSD card/SIM card slot covers are properly seated, with no foreign objects obstructing the seals.
- Do not use the charger/USB port for charging, data transmission, etc. until the phone is completely dry.
- Do not store the device under any circumstance containing electronic erosive material.
- Avoid to pull the device up by holding the antenna or accessories.
- Please power off and unload the battery before cleaning the device.
- Using dry and clean lint-free cloth or hairbrush to keep the device and charger docking port clean.
- Avoid to use any chemical agent including detergent, alcohol, aerosol spray or oil preparations as cleaning solution.
- Dry your device completely after cleaning and before using it again.